



LA BARRIERE AUTOMATIQUE
F B B A I C E N T

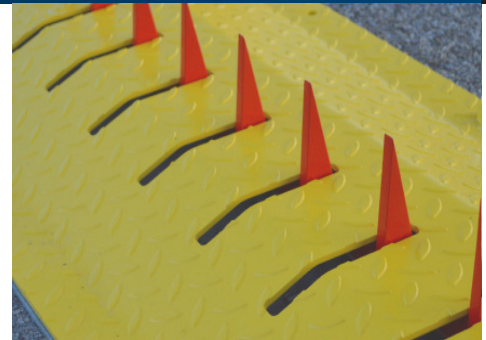
1,5 à 4,5m

LBA H10

PROJECTING TYRE KILLER

Length from 1,5 to 4,5 m

- **Intensive use : 10 000 cycles / day**
- **Variable speed from from 0.6 to 2s**
 - **Supports load of 25t**
- **Fast installation and easy maintenance**
- **Available Tyre killer alone or with barrier**
- **Compatible with all LBA barriers**



Specifications	Technical specifications
Structure:	Sheet metal of thickness 6 mm in galvanized steel Treadplate of thickness 8 mm galvanized and painted Spikes shaft in 304 stainless steel painted for better resistance to corrosion, reinforced by internal alveoli structure
Motorization:	Reversible electric motor for a locking in raised position Holds in high position in case of power failure Assembling motorization on the right or left side of the passage channel
Command:	Management by PLC Lifting and lowering speed adjustable by frequency converter from 0.6 to 2 seconds, Acceleration and deceleration ramps in order to increase lifetime Enslavement of the tyre killer use to the barrier
Dimensions:	Tyre killer height : 60mm Tyre killer length : 1.5 to 4.5m Modules of 1m50 or 1m, connected to the motorization and between them by gimbals allowing to correct civil engineering defects
Spike:	Height : 118mm Spacing between spikes : 125mm Module of 1m50 is equipped with 12 spikes, the 1m module with 8 spikes Pedestrian protection by red protective cap
Optional equipment:	Additional modules of 1m or 1m50 Technical totem Traffic lights Free exit in case of power failure by compression spring Heating cords for cold environment until -40 ° C Custom paint colors available (RAL-based) Fire brigade access control Access control : radio transmitter, card readers, numeric keyboard, etc..

LBA H 10 - PROJECTING TYRE KILLER

From 1,5 to 4,5 m

PROJECTING TYRE KILLER		
Type	Passage width	Number of modules
LBA H ≥ 150	1,50 m	1
LBA H ≥ 200	2,00 m	2
LBA H ≥ 250	2,50 m	2
LBA H ≥ 300	3,00 m	2
LBA H ≥ 350	3,50 m	3
LBA H ≥ 400	4,00 m	3
LBA H ≥ 450	4,50 m	3

MCBF : 5 millions cycles

(Mean cycles between failures)

MTBF : 15 000 h

(Mean time between failures)

MTTR : 30 mn.

(Mean time to recovery)

Protection : IP 54

(Protection rating)

LBA H 10

INSTALLATION

Slewing and conduits:

1 Power supply:

- Janolene Ø 63 mm
- 1000 RO 2V U cable 3 x 2.5 mm²

2 Remote control:

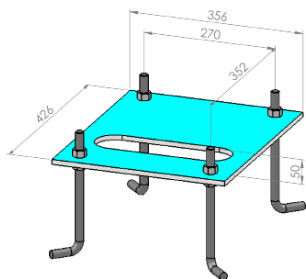
- Green Janolene Ø 40 mm
- 5 pair 9/10th telephone cable

3 Electromagnetic loop feeder:

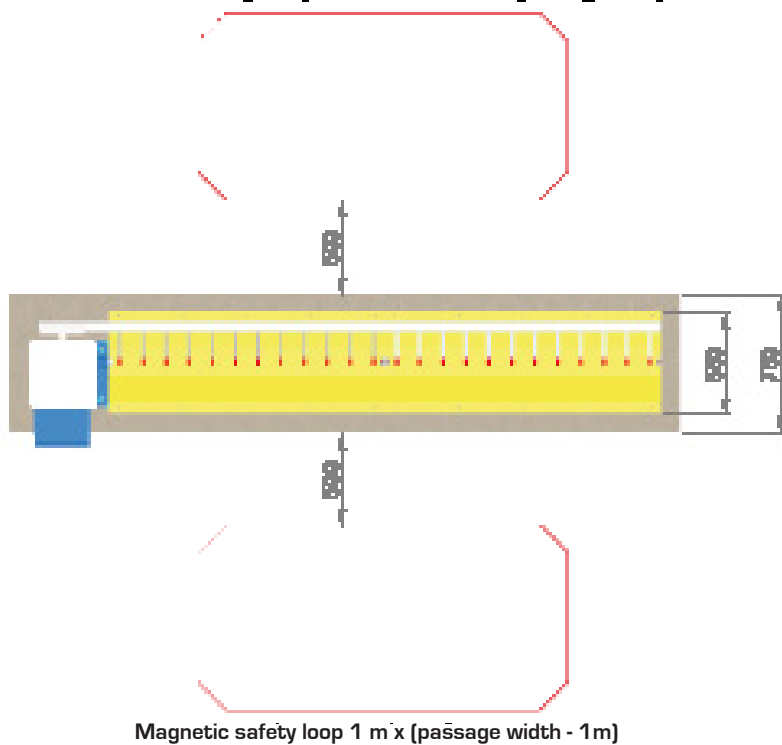
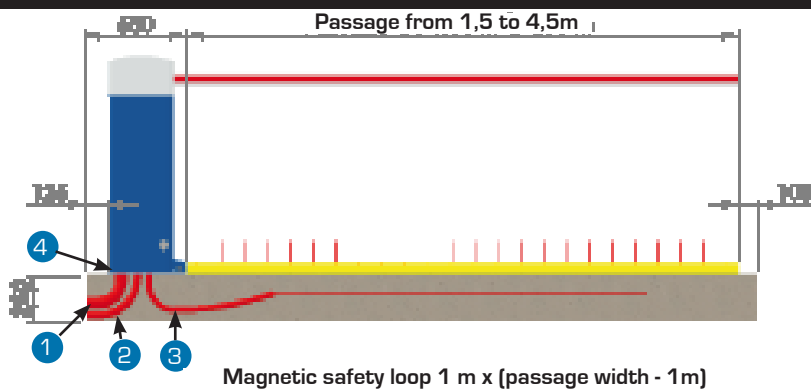
- Ø 30 mm tube
- Twisted pair for loop feeder

4 Anchor plate:

- 10 mm PVC plate
- 4 shanks Ø 16 x 250 mm



The plate must remain level and must be entirely based on a concrete foundation.
Anchor shank spacing 352 x 270 mm.



TASKS TO BE CARRIED OUT BY THE INSTALLER

- Concrete foundation with anchor plate and 4 shanks Ø 16 mm (optional).
- Slewing for power supply cables, remote control cables and magnetic loop.
- Electrical supply: 1000 RO 2V U cable: 3 x 2.5 mm², single-phase 230 V.
- Remote control: 5 pair 9/10th telephone cable.
- Concrete beam 250mm deep